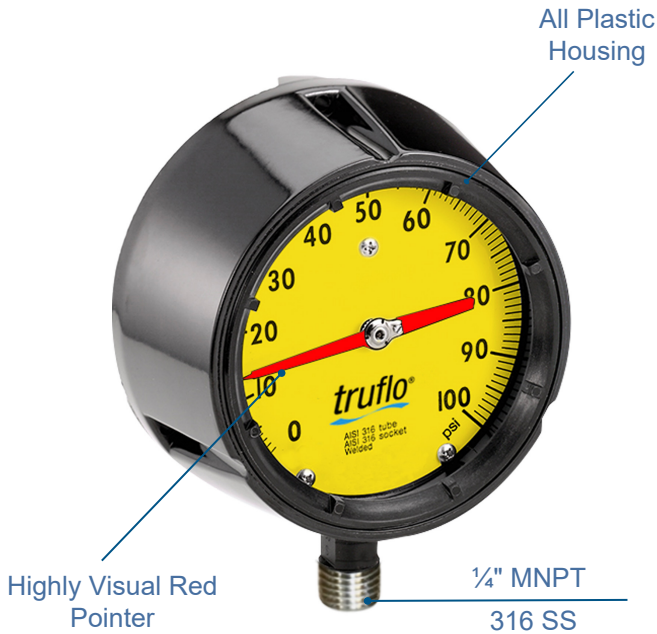


# OBS-GO4 SERIES

## 4 1/2" Plastic | 316 SS Pressure Gauge

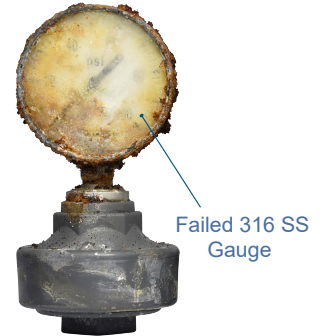


- ❑ Extra Large 4 1/2" Dial
- ❑ Industry's Most Accurate |  $\pm 0.75\%$
- ❑ Suitable for Corrosive Environments



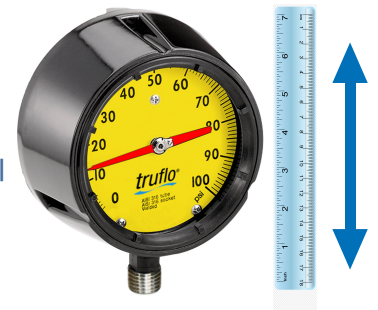
### Corrosion Resistant Casing

- ❑ Corrosion Resistant PP Housing
- ❑ High Impact Polycarbonate Lens
- ❑ Perfect for Corrosive Environments Where Stainless is Unreliable



### Extra Large Display

- ❑ 4 1/2" Dial Size
- ❑ Bright Yellow Background
- ❑ Highly Visual Red Pointer | See from a Distance
- ❑ 0-60 | 0-100 | 0-160 Psi



### GI Series Gauge Guard

- ❑ Protect Internals of Gauge from Corrosive Liquids
- ❑ PTFE Teflon® Bonded Diaphragm
- ❑ PVC | PP | PVDF



### Features

- ❑ 1/4" MNPT 316 SS Connection
- ❑ Dual Scale | psi | bar
- ❑ Red | Yellow Highly Visible Dial
- ❑ Perfect Mate for GI Series Gauge Guards

### Product Description

The OBS-GO4 Series Pressure Gauge is the industry's most accurate pressure gauge on the market. With a Thermoplastic Polypropylene enclosure, OBS-GO4 Series gauges were engineered to last in the most corrosive environments.

A 1/4" NPT 316 SS connection comes standard on all OBS-GO4 Pressure Gauges. This connection allows for them to be a perfect mate with our GI Series Gauge Guards when dealing with extremely corrosive chemicals.

Gauge guards are utilized to protect the pressure gauge from any corrosive media in the process system via an isolator.

OBS-GO4 Pressure Gauges come with a super bright yellow faceplate and a bright red visual pointer. These colors paired with the large 4 1/2" dial size, allow for the OBS-GO4 Pressure Gauge to be easily readable from a distance.

316 SS

PP



# OBS-GO4 SERIES

## 4 1/2" Plastic | 316 SS Pressure Gauge



### Specifications

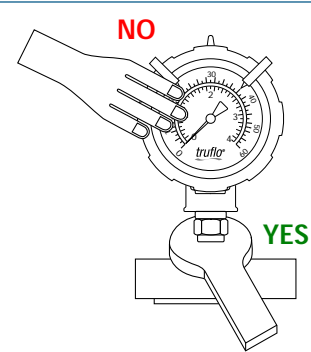
Mounting	Direct Mount   Bottom Connection
Process Connection	1/4" MNPT
Measuring Principle	Bourdon Tube   316 SS
Pressure Ranges   Psi	0-60   0-100   0-160
Lens	High Impact Polycarbonate
Accuracy	± 0.75%
Operating Temperature	PP - 190°F
Dial Diameter	4 1/2"

### Installation Instructions

Do not tighten by grasping the case of the gauge as this may cause damage. **Always Pressure Test Connections for Leaks with Water Prior to Use on Chemical Service**

Before installing the OBS-GO4 Series pressure gauge, ensure attention is given to the Process Liquid, Chemical Compatibility, Temperature, Vibration, Pressure Spikes, and other climatic and application conditions that may adversely affect the performance.

The user shall ensure that the correct gauge pressure range and the correct materials of construction are selected.



### Standards and Approvals

CE | FCC

RoHS Compliant

### Temperature | Pressure Graphs | Non-Shock

**Note:** The Pressure/Temperature graphs are specifically for the Truflo® Pressure Gauges, during system design the specifications of all components must be considered.

### Model Selection

OBS-GO4 - 0-30

Body Material	Pressure Range   psi
PP	0 - 60 0 - 100 0 - 160

■ = PP

