

# Mini & Compact Diaphragm Seals

DIAPHRAGM SEALS



Model W205



Model W305

- ▶ All-Welded Design  
No Gaskets or Bolts
- ▶ 1/4 NPT or 1/2 NPT  
Process Connections
- ▶ 316L Stainless Steel  
Construction

Trerice **Mini & Compact Diaphragm Seals** provide an economical way to isolate and protect pressure instruments from corrosion and clogging.

**Style 205** Diaphragm Seals are designed for use with pressure ranges of 60 psi or greater and can be mounted to pressure gauges of 3 1/2" dial size or smaller.

**Style 305** Diaphragm Seals are designed for use with pressure ranges of 60 psi or greater and can be mounted to pressure gauges of 4 1/2" dial size or smaller.

**Style 306** Diaphragm Seals include all features found on the 305 with the addition of a 1/4 NPT flushing connection.

**Selection of the proper diaphragm seal is the sole responsibility of the user. Temperature and pressure limitations must be considered. Please refer to the Diaphragm Seal Design & Operation Section of this catalog. Improper application may cause failure of the seal, resulting in possible personal injury or property damage.**

**For correct use and application of all diaphragm seals, please refer to Diaphragm Seal Standard ASME B40.2.**

## SPECIFICATIONS

Style	Diaphragm Type	Diaphragm Size	Minimum Pressure Range	Process Connection	Clean-out Design	1/4 NPT Flushing Connection
205	Welded Metal	Mini	0 to 60 psi when mounted to 3 1/2" gauge	Threaded	No	No
305	Welded Metal	Compact	0 to 60 psi when mounted to 4 1/2" gauge	Threaded	No	No
306	Welded Metal	Compact	0 to 60 psi when mounted to 4 1/2" gauge	Threaded	No	Yes

## HOW TO ORDER

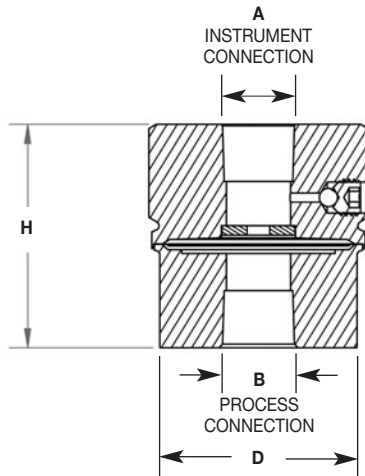
Sample Order Number: **W 2 05 01 S S S**

Diaphragm Type	Diaphragm Size	Style	Connection Size	Diaphragm Material	Process Housing Material	Instrument Housing Material
W Welded	2 Mini	05 Non Clean-out, Welded Body	See Connection Sizes Table	S 316 SS	S 316 SS	S 316 SS
	3 Compact	06 Flushing, Welded Body				

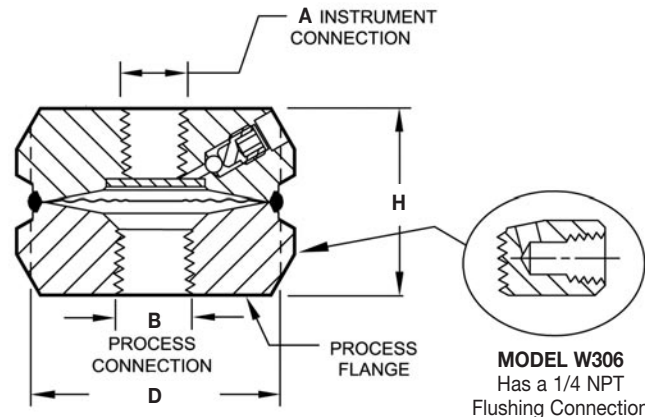
# Mini & Compact Diaphragm Seals

All dimensions are nominal. Dimensions in [ ] are in millimeters.

DIAPHRAGM SEALS



**MODEL W205**



**MODEL W306**

**MODEL W306**  
Has a 1/4 NPT  
Flushing Connection

Style	A	B	H	D
205	1/4 NPT	1/4, 1/2 NPT as specified	1.53 [39]	1.5 [38]
305	1/4, 1/2 NPT as specified	1/4, 1/2 NPT as specified	1.75 [44]	2.25 [57]
306	1/4, 1/2 NPT as specified	1/4, 1/2 NPT as specified	1.75 [44]	2.25 [57]

## Sizes

Connection Sizes		
Code	Instrument Connection (NPT)	Process Connection (NPT)
01	1/4	1/4
02*	1/2	1/4
03	1/4	1/2
04*	1/2	1/2

\* Not available on style 205.