

# PALMER

*Precision instruments from Palmer offer you the quality and reliability you rely on for your process.*

## **Stainless Steel Case Contractor Gauge Model 45SB - 4-1/2" Gauge**

Ideal for use in HVAC applications, Water lines, Air, Gas, Oil, and other applications not corrosive to wetted parts.

### **FEATURES**

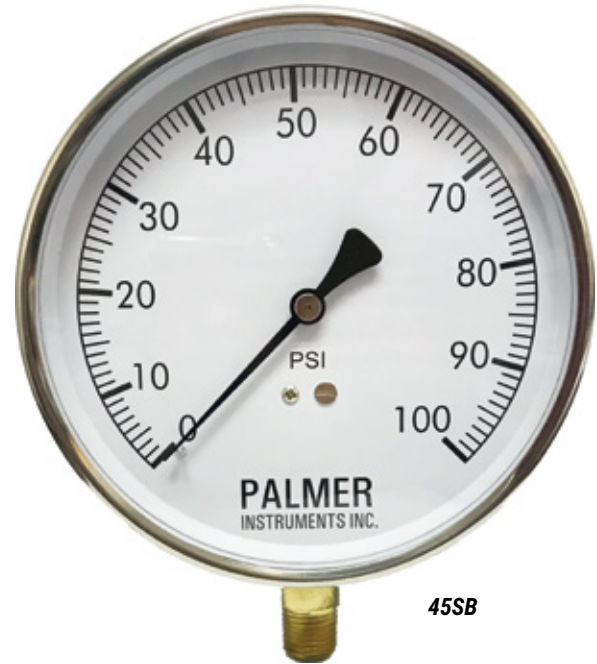
- Durable - Built for the Contractor.
- Economically priced for the job.
- Can be calibrated by removing crystal.

### **APPLICATIONS:**

- HVAC
- Water
- Air
- Gas
- Oil, and other applications not corrosive to wetted parts

### **Model 45SB Specifications**

<b>Case:</b>	304 AISI Stainless Steel Case, in 4-1/2" (125mm) diameter
<b>Fill:</b>	Dry
<b>Ring:</b>	304SS Removable Bezel Ring with 3 screws
<b>Window:</b>	Acrylic
<b>Socket:</b>	Brass
<b>Connection:</b>	1/4" NPT Standard
<b>Bourdon Tube:</b>	Phosphor Bronze C-Tube
<b>Movement:</b>	Brass
<b>Pointer:</b>	Black painted Aluminum, zero adjustable
<b>Dial:</b>	White Aluminum with black markings in accordance with ASME B40.1 -2005
<b>Accuracy:</b>	± 1% Full Scale
<b>Range Availability:</b>	PSI, Metric and Dual Scales.
<b>Ambient Temperature:</b>	-4° to 140°F (-20° to 60°C)
<b>Overpressure Limit:</b>	120%



**45SB**



**45SB Back of Gauge**

*Specifications subject to change without notice. Minimum order quantities may apply.*

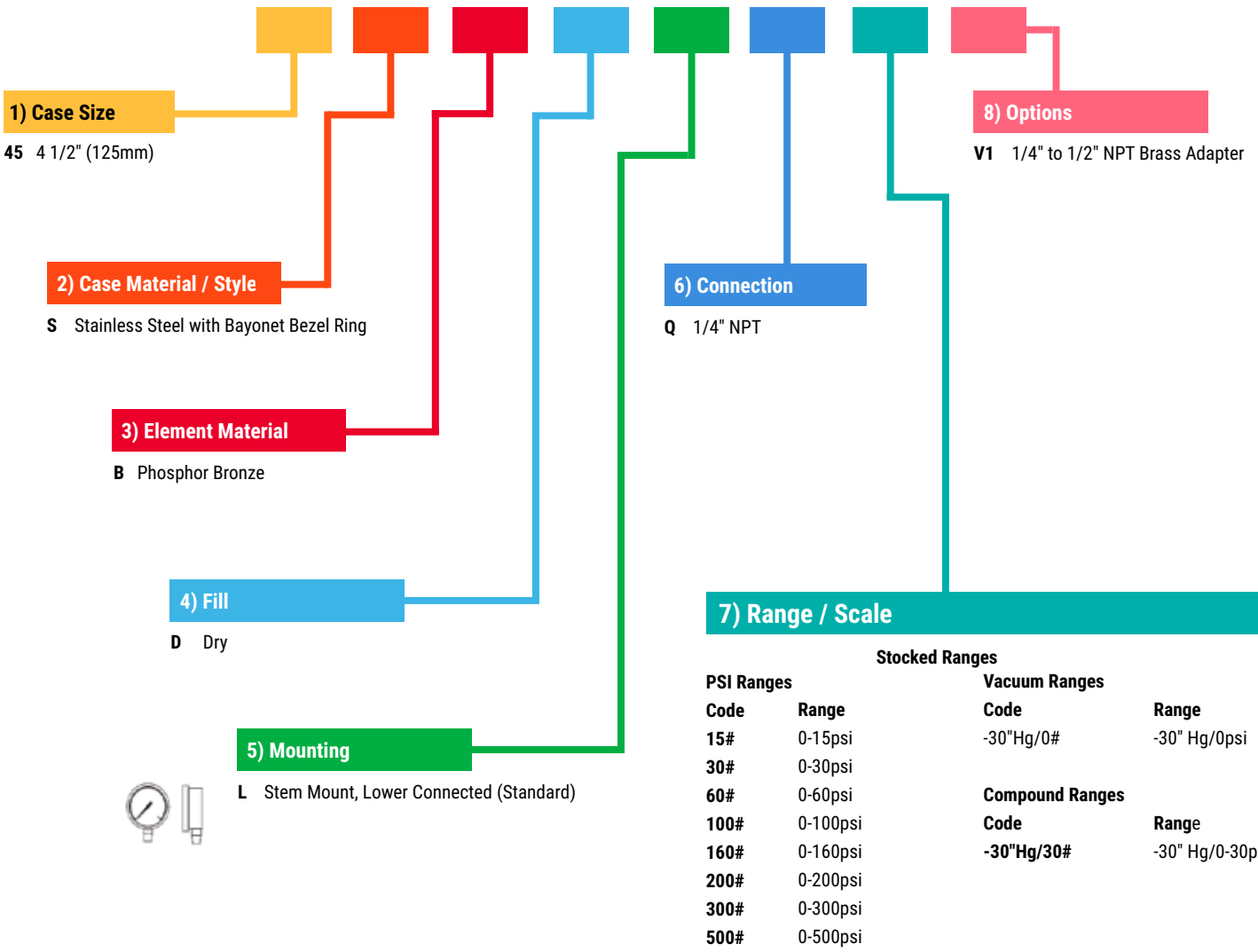
June  
2021

Palmer Wahl Instruments, Inc. • Toll Free: 800-421-2853 • Phone: 828-658-3131 • [www.palmerwahl.com](http://www.palmerwahl.com)



**Palmer / Wahl**  
BEYOND THE SCALE

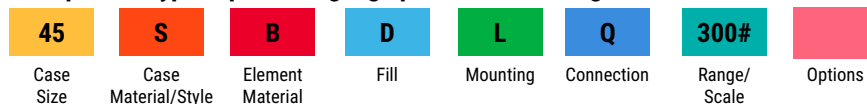
# Pressure Gauge Model 45SB Ordering Guide



\* All ranges In Stock except 500psi

**Please Note: If not in Stock, minimum order is 100 pieces PER CASE SIZE AND RANGE. Mounting style can be mixed within Case size and Range to achieve minimum**

### Example of a typical pressure gauge part number configuration:



Specifications subject to change without notice. Minimum order quantities may apply..