



ULL-c Shear-web Compression Load Cell

Features

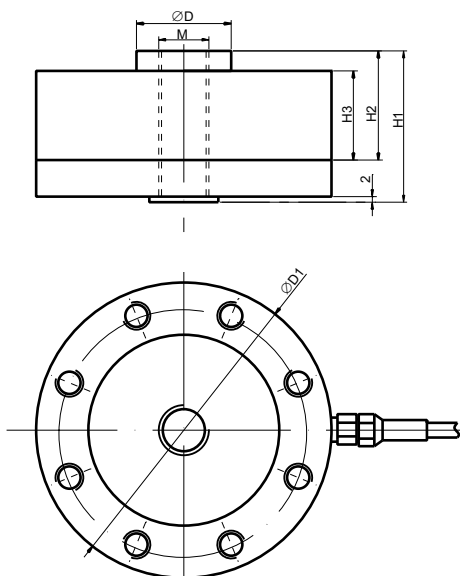
- Capacity: 1~100t
- Alloy steel material, surface nickle treatment, suitable for different bad & dangerous conditions.
- Shear-web compression type, easy installation
- Application for hopper scales and vehicle scales



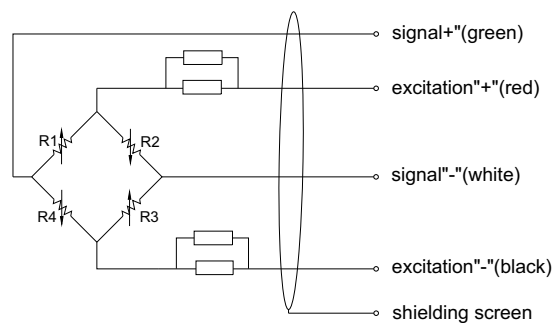
Specifications

capacity	1t/2t/3t/5t/10t/20t/25t/50t/100t
output	2.0±0.008mV/V
combined error	0.03%FS
non-linearity	±0.03%FS
hysteresis	±0.03%FS
repeatability	±0.03%FS
creep	±0.03%FS/30min
zero unbalance	±1%FS
excitation voltage	9VDC~12VDC
operating temperature range	-20~+55°C
comperature temperature range	-10~+40°C
temperature coefficient of zero	0.05%FS/10°C
temperature coefficient of span	0.03%FS/10°C
input resistance	700±10Ω
output resistance	700±5Ω
insulation resistance	≥5000MΩ@50VDC
safe overload	150%FS
ultimate overload	200%FS
protection	Ip66
electrical interface	4-core shielded cable, diameter:5mm, length:3m

Dimensions



Electrical connection



Capacity(t)	H1	H2	H3	M	D	D1
1~5	67	46	34	M16×1.5	32	105
10	80	53.8	41	M32×1.5	41	121
20~100	85	53.8	47	M32×1.5	41	121