

# Connection Heads General Purpose

## NEW! General Purpose Connection Heads

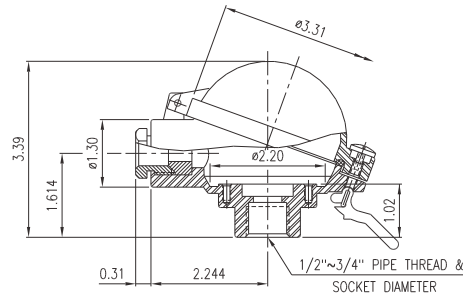
Providing resistance to dust and moisture for temperature sensors is extremely important to your process. Designed for heavy industrial and process applications, **Wahl's New Industrial Connection Heads** come in a variety of choices

to meet your specific needs. All our Connection Heads are compatible with our new Terminal Blocks or Transmitters, shown on page, 8. For additional connection heads contact your Wahl Distributor for information.

### General Purpose: Aluminum - Flip Top Heads

Model	Type	Material	Process	Conduit
12401-03	General Purpose	Aluminum	1/2" NPT	1/2" NPT
12401-19	General Purpose	Aluminum	1/2" NPT	3/4" NPT

- Suitable for DIN size Transmitters
- Baked enamel silver paint and corrosive resistant hardware
- Rated IP68

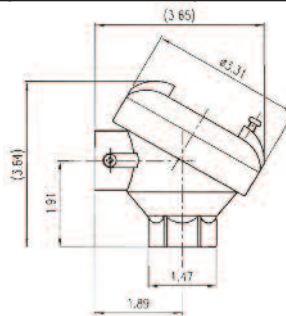


12401-03 Aluminum,  
1/2" Process x 1/2" Conduit

### General Purpose: Aluminum - Screw Top Heads

Model	Type	Material	Process	Conduit
12401-02	General Purpose	Aluminum	1/2" NPT	1/2" NPT
12401-10	General Purpose	Aluminum	1/2" NPT	3/4" NPT

- Suitable DIN Transmitters & most Terminal Blocks
- Rated NEMA 4X & IP68
- Epoxy painted for NEMA protection, shiny, non-painted finish available

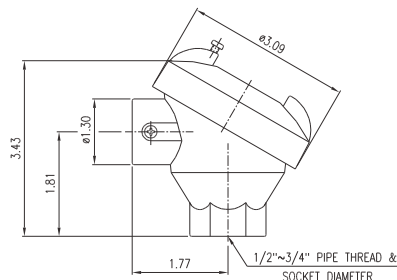


12401-10 Aluminum,  
1/2" Process x 3/4" Conduit

### General Purpose: Stainless Steel - Screw Top Heads

Model	Type	Material	Process	Conduit
12401-09	General Purpose	316SS	1/2" NPT	3/4" NPT

- Suitable for DIN size Transmitters & Terminal most blocks
- Rated NEMA 4X



12401-09 316SS,  
1/2" Process x 3/4" Conduit

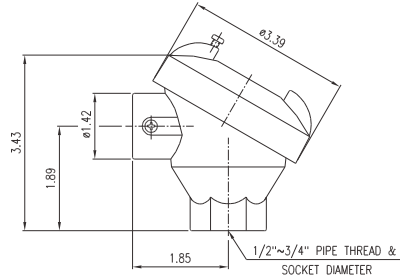


# Connection Heads General Purpose & Explosion Proof

## NEW! General Purpose Connection Heads

General Purpose: Cast Iron - Screw Top Heads				
Model	Type	Material	Process	Conduit
12401-08	General Purpose	Cast Iron	1/2" NPT	1/2" NPT
12401-11	General Purpose	Cast Iron	1/2" NPT	3/4" NPT

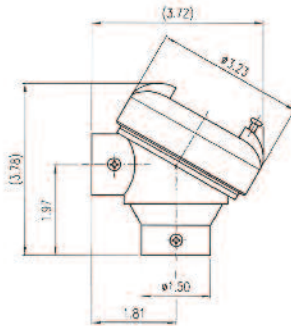
- Suitable for DIN size Terminal Blocks & Transmitters
- Rated NEMA 4X
- Painted in High Temperature Black Paint



12401-08 Cast Iron,  
1/2" Process x 1/2" Conduit

General Purpose: Polypropylene - Screw Top Heads				
Model	Type	Material	Process	Conduit
12401-06	General Purpose	Polypropylene	1/2" NPT	3/4" NPT

- Suitable for DIN size Transmitters & most Terminal Blocks
- FDA Approved Polypropylene

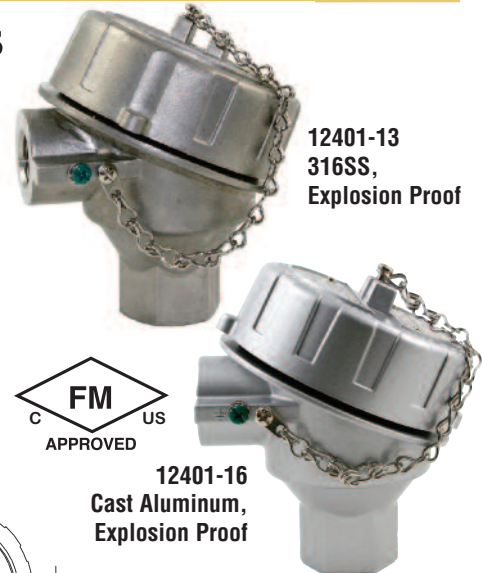
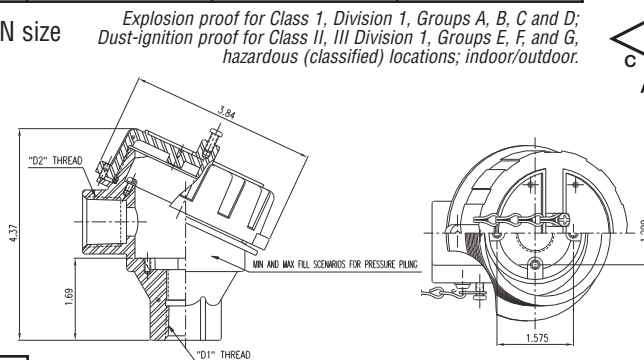


12401-06 Polypropylene,  
3/4" Process x 3/4" Connection

## Explosion Proof Connection Heads

Explosion Proof: 316SS & Cast Aluminum - Screw Top Heads				
Model	Type	Material	Process	Conduit
12401-13	Explosion Proof	316SS	1/2" NPT	1/2" NPT
12401-14	Explosion Proof	316SS	1/2" NPT	3/4" NPT
12401-16	Explosion Proof	Cast Aluminum	1/2" NPT	1/2" NPT
12401-17	Explosion Proof	Cast Aluminum	1/2" NPT	3/4" NPT

- Suitable for 40mm and DIN size Terminal Blocks & Transmitters
- Supplied with Stainless Steel chain and screws
- 316SS: NEMA 4X
- Cast Aluminum: NEMA 4



12401-13  
316SS,  
Explosion Proof

12401-16  
Cast Aluminum,  
Explosion Proof



Calibration Services Available

(800) 421-2853 • FAX (828) 658-0728 • www.palmerwahl.com

PW1260  
04/11 Rev B

**PALMER Wahl**  
INSTRUMENTATION GROUP  
Continued Innovation Since 1836  
ISO 9001:2008 CERTIFIED