

PALMER

A full line of economical gauges featuring the toughness and beauty of stainless steel cases.

Stainless Steel Case Gauges

Model 15CB - 1-1/2" Gauge

Model 20CB - 2" Gauge

Model 25CB - 2-1/2" Gauge

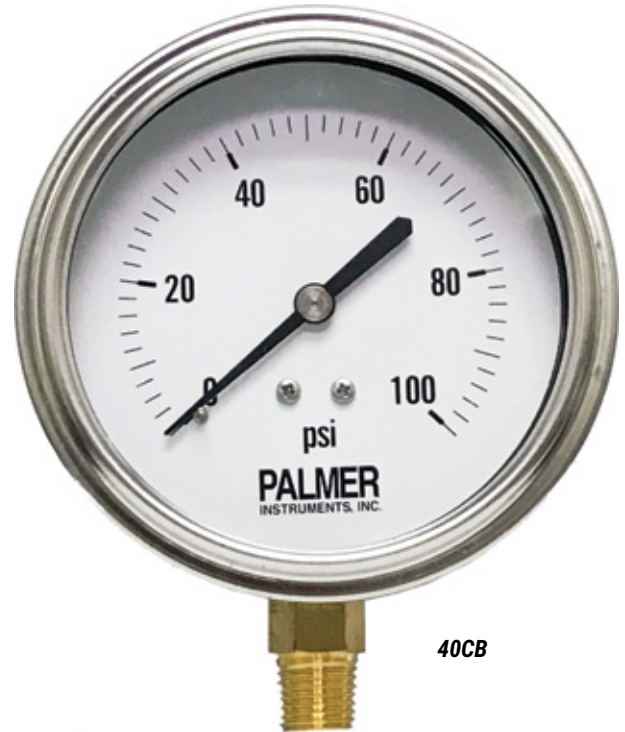
Model 40CB - 4" Gauge

FEATURES

- Industrial use in Water lines and Steam lines
- General Industrial use
- Economical
- Accurate
- All Stainless Steel
- Brass Internals

Models 15CB • 20CB • 25CB • 40CB Series Specifications

Case:	AISI 304 Stainless Steel. 1-1/2" (40mm), 2" (50mm), 2-1/2" (63mm), and 4" (100mm) diameter
Fill:	Dry or Glycerin Filled. Silicone Fill optional on 2-1/2" and 4".
Ring:	AISI 304 Polished Stainless Steel, Crimped Bezel Ring
Window:	Instrument Glass or Engineered Plastic on 1-1/2" Acrylic on 2", 2-1/2", and 4"
Socket:	Brass
Connection:	1/8" NPT on 1-1/2", 1/4" NPT on 2", 2-1/2" and 4" Optional 1/4" to 1/2" SS Adapter
Bourdon Tube:	Brass or Phosphorus Bronze
Movement:	OT59 Brass Gears with 304 Stainless Steel plates
Pointer:	Painted Black Aluminum, non-adjustable
Dial:	White Aluminum with black markings in accordance with ASME B40.1 -2005
Accuracy:	15CB: ± 2% mid-range. 20CB, 25CB and 40CB: ± 1.5% mid-range
Range Availability:	PSI, Metric, and Dual Scales.



40CB



40CB Back of Gauge



40CB Fill Top



Dry

Wet

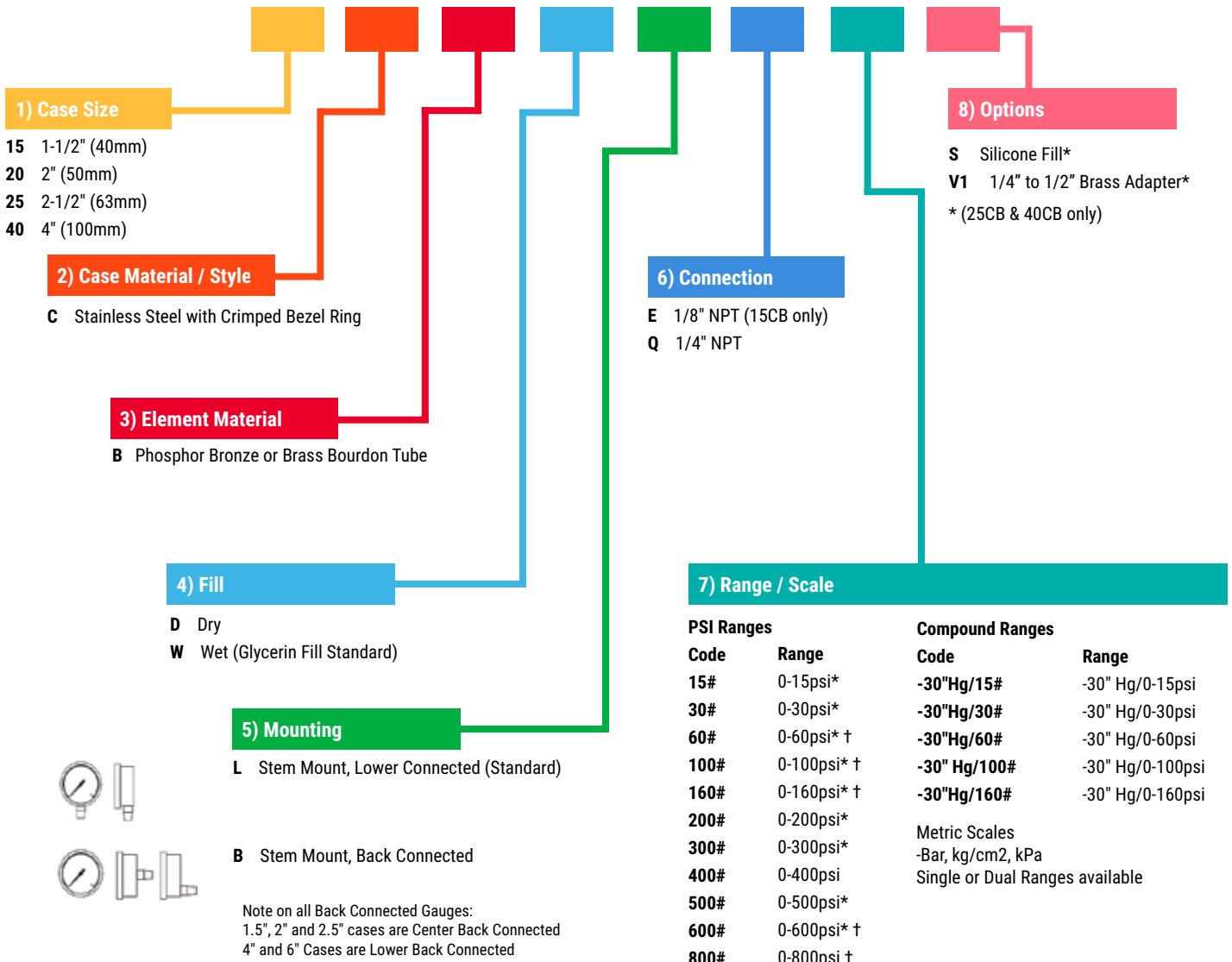
Specifications subject to change without notice. Minimum order quantities may apply.

June 2021

Palmer Wahl Instruments, Inc. • Toll Free: 800-421-2853 • Phone: 828-658-3131 • www.palmerwahl.com

Palmer / Wahl
BEYOND THE SCALE

Pressure Gauge Models 15CB • 20CB • 25CB • 40CB Ordering Guide



8) Options
 S Silicone Fill*
 V1 1/4" to 1/2" Brass Adapter*
 *(25CB & 40CB only)



Note on all Back Connected Gauges:
 1.5", 2" and 2.5" cases are Center Back Connected
 4" and 6" Cases are Lower Back Connected

Please Note: Not all configurations are available!

15CB / 20CB - if not In Stock, Minimum order 50 pieces PER CASE SIZE, Mix and Match, Dry, Wet, Ranges, or Mounting.

25CB / 40CB - Stock item -if not In Stock, Minimum order 25 pieces PER CASE SIZE, Mix and Match, Dry, Wet, Ranges, or Mounting.

*** Non-stock ranges may require a 5 piece minimum per range, as part of the 25 or 50 piece overall minimum.**

* In Stock for 25CB
 † In Stock for 40CB

Example of a typical pressure gauge part number configuration:



Specifications subject to change without notice. Minimum order quantities may apply..