

Description

ULB3351 flange type level transmitter is one kind of scene transmitter for mounting in pipelines or vessels. Because its isolating diaphragm contacts liquid medium directly, not need pressure pipe to draw out the pressure from positive pressure side (H side), therefore ULB-3351 is suitable for level, pressure, density measurement of high temperature, macro viscosity, easy crystallized, easy precipitated media.

ULB3351 flange type level transmitter includes plane type and insert type. The mounting flange has 3" and 4" according to ANSI standard. If the user has any special requirement please indicate on ordering sheet. The wetted part material of ULB3351 has SS 316L, Hastelloy-C 276, tantalum and Monel etc for options.

The ULB3351 flange type level transmitter is especially suitable for level, pressure and density measurement of special media (high temperature, macro viscosity, easy crystallized, easy precipitated, strong corrosion) in open or sealed containers.

Features

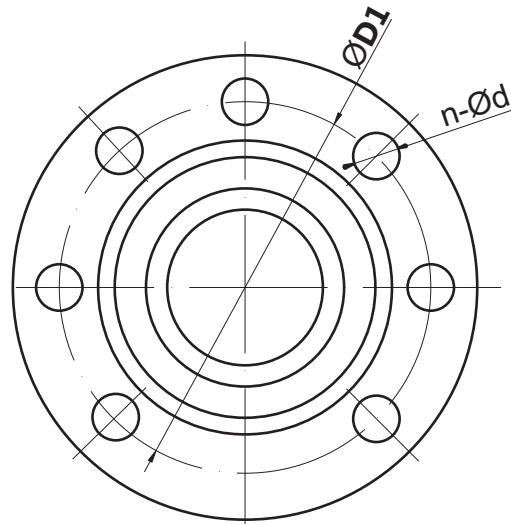
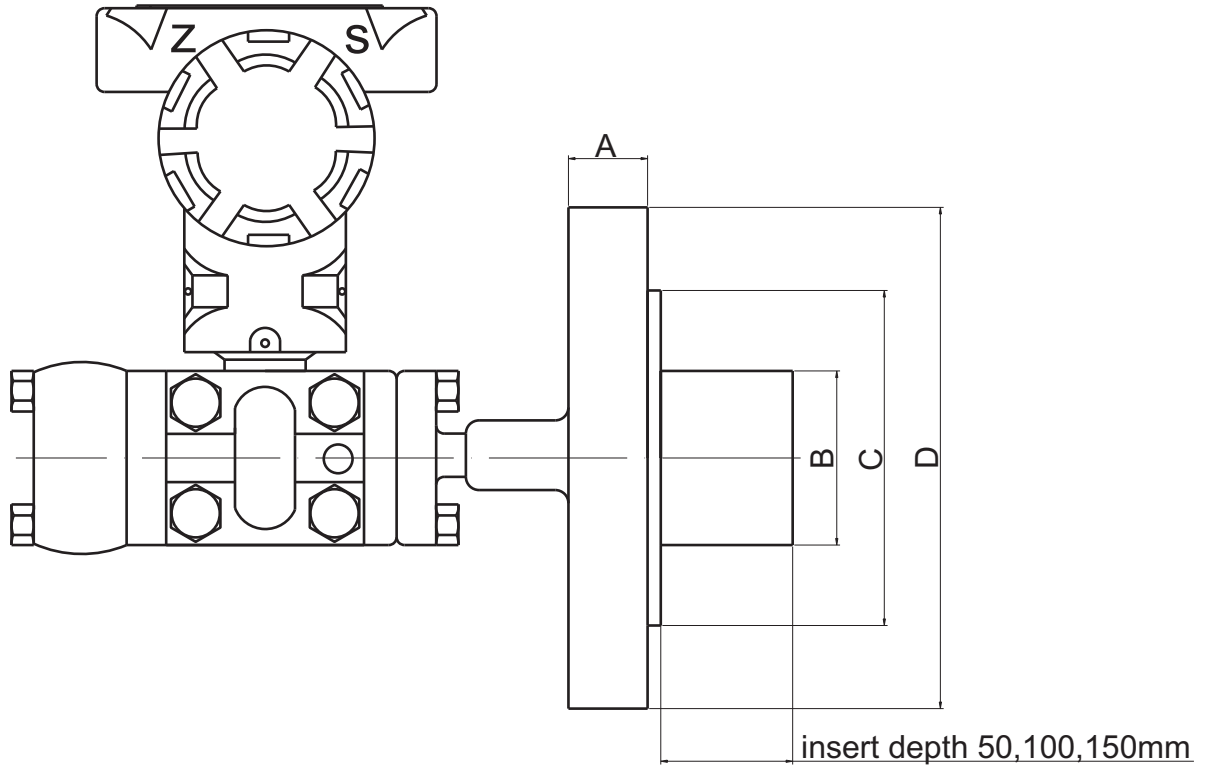
- Measuring range: 0~2.67kPa...2500kPa.
- For level, pressure, density measurement of high temperature, macro viscosity, easy crystallized, easy precipitated or strong corrosive media.
- Adjustable range: 6:1 for analog type, 15:1 for intelligent type.
- High accuracy, good reliability and stability.
- Intrinsic safety and flame proof option.



Specifications

pressure medium	liquid compatible with stainless steel
measuring ranges	0~2.67kPa...2500kPa
output signal	4~20mA (HART optional)
accuracy	0.1%FS, 0.2%FS(standard), 0.5%FS
load resistance	$R_L = (U - 12V) / 0.02A$ (4~20mA current output) U—loop voltage (V)
long-term stability	<0.1%FS/year
supply voltage	12~45VDC
storage temperature range	-40~+105°C
operating temperature range	-40~+85°C
measured media temperature range	-40~+200°C
temperature coefficient of zero	0.1%FS/10°C
temperature coefficient of span	0.05%FS/10°C
insulation resistance	100MΩ@50VDC
process connection	3" mounting flange or others
protection	IP67
explosive-proof	Exia II CT6 or Exd II CT6
material of pressure membrane	316L stainless steel
oil-filled	silicone oil or fluorocarbon oil
housing material	low copper aluminum alloy

Dimensions



flange size						bolt hole		
dimensions	type	Diameter (D)	A	B	C	number	diameter(d)	diameter distribution (D1)
3"	150Lb	190	30	66	127	4	19	152
4"	150Lb	228	30	89	157	8	19	190
3"	300Lb	210	35	66	127	8	22	168
4"	300Lb	254	38	89	157	8	22	200



ULB3351 Flange Type Level Transmitter

Ordering code

ULB3351								
code	measuring ranges of intelligent type	measuring ranges of analog type						
IV	0~2.67...40kPa	0~6...40kPa						
V	0~16.7...250kPa	0~40...250kPa						
VI	0~66.7...1000kPa	0~160...1000kPa						
VII	0~167...2500kPa	0~400...2500kPa						
code	output							
O1	4~20mA analog output							
H	4~20mA with HART Protocol							
code	accuracy							
B	0.1%FS							
C	0.2%FS							
D	0.5%FS							
code	mounting flange & material							
A	3"(80)150LB(2.0MPa)	zinc plated carton steel or 316L SS						
B	4"(100)150LB(2.0MPa)	zinc plated carton steel or 316L SS						
C	3"(80)300LB(5.0MPa)	zinc plated carton steel or 316L SS						
D	4"(100)300LB(5.0MPa)	zinc plated carton steel or 316L SS						
code	materials: flange, exhaust vlave, diaphragm							
12	nickle plated carbon steel , 316, 316L							
15	nickle plated carbon steel,316,Tantalum							
22	316,316,316L							
23	316,316,Hastelloy-C							
24	316,316,Monel							
25	316,316,Tantalum							
33	Hastelloy-C, Hastelloy-C, Hastelloy-C							
35	Hastelloy-C, Hastelloy-C, Tantalum							
code	oil-filled							
S	Dc200# series silicone oil -40~149°C							
H	high temperature silicone oil 15~315°C							
F	fluorocarbon oil 45~205°C							
code	insert depth							
H0	0							
H1	50mm							
H2	100mm							
H3	150mm							
code	other functions							
D0	no display meter							
D1	linear display meter, 0~100%scale							
D2	3-1/2LCD digital meter							
V1	side exhaust valve on top							
V2	side exhaust valve on bottom							
E1	flame proof Exd II CT6							
E2	intrinsic safety Exia II CT6							
ULB3351	IV	O1	C	C	12	S	H0	D2V1E1

*: Please indicate required pressure range when ordering. If not, the product will be set the max. range when leaving our factory.