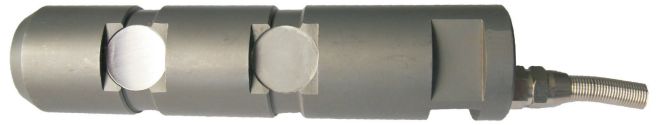


Features

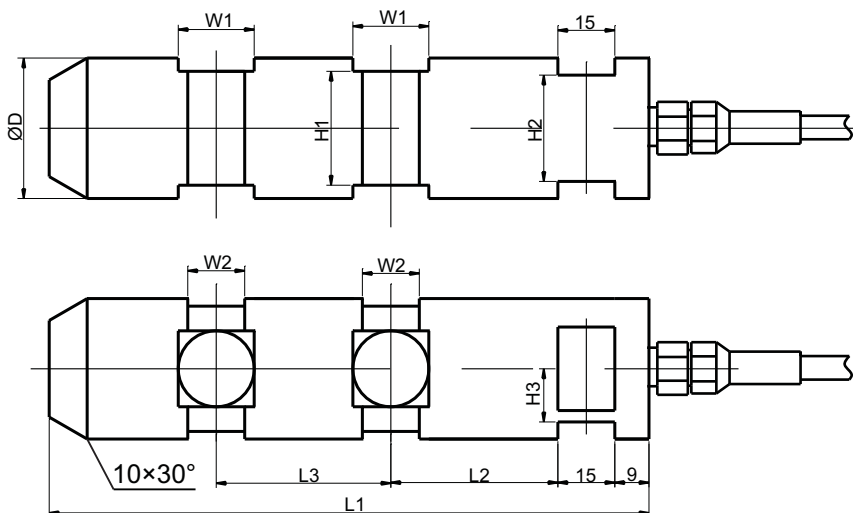
- Capacity: 20kN~800kN
- Alloy steel material, welded sealing, oil-proof, water-proof, anti-corrosion.
- Double ended shear beam, pin type, easy installation
- Application for draft sensors, cranes, hopper weighing process weighing and onboard vehicle weighing



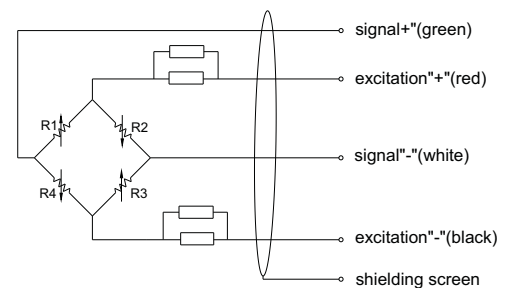
Specifications

capacity	20kN/30kN/50kN/100kN/200kN/300kN/500kN/800kN	
output	2±0.01mV/V	
combined error	0.2%FS	0.5%FS
non-linearity	±0.2%FS	±0.5%FS
hysteresis	±0.2%FS	±0.5%FS
repeatability	±0.1%FS	±0.2%FS
creep	±0.2%FS/30min	±0.3%FS/30min
zero unbalance	1.5%FS	
excitation voltage	5VDC~15VDC	
operating temperature range	-35~+70°C	
comperature temperature range	-10~+55°C	
temperature coefficient of zero	0.1%FS/10°C	
temperature coefficient of span	0.1%FS/10°C	
input resistance	410±30Ω	
output resistance	350±10Ω	
insulation resistance	≥5000MΩ@50VDC	
safe overload	150%FS	
ultimate overload	200%FS	
protection	IP66 or IP67	
electrical interface	4-core shielded cable, diameter:5.7mm, length:5m	

Dimensions



Electrical connection



Capacity(kN)	D	H1	H2	H3	L1	L2	L3	W1	W2
20,30,50	37	30	28	14	158	44	46	20	15
100	50	41	38	12.5	158	44	46	20	15
200	70	57	54	25	245	44	121	32	27
300,500	95	80	76	37	285	52	145	32	27
800	108	92	88	44	285	52	145	32	27